



Module Box

# MOBILE MINING CONTAINER

BitTech



HENGSHUI  
BITTECH

info@module-box.com  
[www.module-box.com](http://www.module-box.com)

# CONTENT

P03.....About BitTech

P06.....Mobile Mining Container

P06. Fan Cooling Mobile Mining Container

P10. Immersion Mobile Mining Container

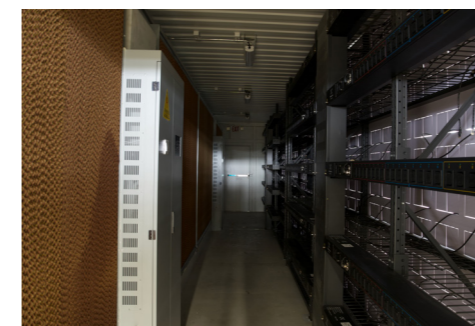
P14.....Solutions

P16.....Customers

P85.....Technology



# ABOUT BITTECH



Founded in 2020, Hengshui BitTech Co., Ltd. is a vigorous, fast-growing mobile mining container manufacturer and custom solution provider specialized in the R&D and production of mobile mining container. We are so proud to have so many imaginative, passionate professionals to join us and work together to solve all problems for our customers across the world.

Infrastructure of our Module Box mobile mining container adapts to high density, low PUE and rapid deployment requirements. Besides, we have upgraded and optimized our power supply, cooling system and management system in a comprehensive way. Our automatic, intelligent mobile mining container will help you to greatly save operating costs, maximize the interior space and provide you with a small intelligent machine room with higher manageability and expansibility.

Conventional mining farm requires a large amount of investment and have many constraints. It not only needs a large amount of money, but also needs backup power sources. Once the mining container set up, it is hard to move it to other places, so long-term income becomes very important. However, the price of cryptocurrency dynamically fluctuates, which also makes conventional mining farm facing a greater challenge. Mobile mining container emerges as the times require.



VS



**BitTech**

**Others**

**Higher than Electrical Safety Standard**  
Electrical appliances are specially designed for high-powered miners, making electricity safer.

**No safety guarantee**  
Non-professional electrical appliances are randomly assembled, high safety risks.

**4P Safety System**  
Extra 4th protection — Single miner electric leakage trip protection.

**Traditional 3P System**  
Traditional 3P protection, increasing downtime cost.

**100% Smart System**  
24 Hour online monitor, achieve 0 labor cost.

**Traditional System**  
Local monitor speeds lots of O&M staff costs.

**90% Maintenance Reduction**  
Self-developed intelligent remote system reduces 90% maintenance cost.

**Large Cost Outlay**  
O&M staff employment or third-party hosting increases cost

**BitTech**

**Others**

**100% Reliable**  
Exclusive 3 levels authority system refuse embezzlement.

**O&M Staff Embezzlement**  
O&M Staff embezzles hash rate easily and profits reduced.

**99% Online Hash Rate Guarantee**  
3.0 intelligent system allows real-time monitor and fault alarms, increasing electricity efficiency.

**No guarantee**  
Traditional system are subject to lags and human risk, decreasing electricity efficiency.

**Maximum 7-Layer Stacks**  
Miners can be stacked in multi-layers, saving space and increasing the number of servers.

**No Stacking**  
The cooling system is located at the bottom of the miners and cannot be stacked.

**Multi-Platform Interconnection**  
Web, APP and local three-in-one security protection, making operation more intelligent.

**No Data Interconnection**  
Single channel source make operation complex and risk increasing.

**700 Days Only Change, No Repair**  
All electrical appliances enjoy 700-day worry-free after-sales service, only change, no repair.

**30-360 Days Short-Term Service**  
Short after-sale period increases quality problem and shutdown cost increasing risk.

**Worry-Free Customs Clearance**  
Safe, legible, exclusive customs code eliminates your clearance worries.

**Complex Customs Clearance**  
No exclusive customs code making clearance complex and high-cost.



# Fan Cooling Mobile Mining Container

Fan cooling mobile mining container is specially designed for large-scale digital mining. This container adopts double-layer water curtains and built-in fans for system cooling. The outer layer curtain helps to reduce the internal ambient temperature and the inner layer curtain helps to alleviate the influence of air humidity on miners. Meanwhile, the built-in fan cooling helps to reduce the operating costs of mining containers. It looks like a container from its appearance, but its inside and outside are designed to support all cryptocurrency miners and get maximum hashrate on the market today.

## Distribution System

- Support wide voltage and wide frequency
- Power supply range: 360V – 480V, 50–60 Hz
- Internal output voltage: 200V – 277V, 50–60 Hz
- Maximum allowable total power: 1500 kw/h (6250A)
- Multiple security protection system
- Exclusive intelligent control system



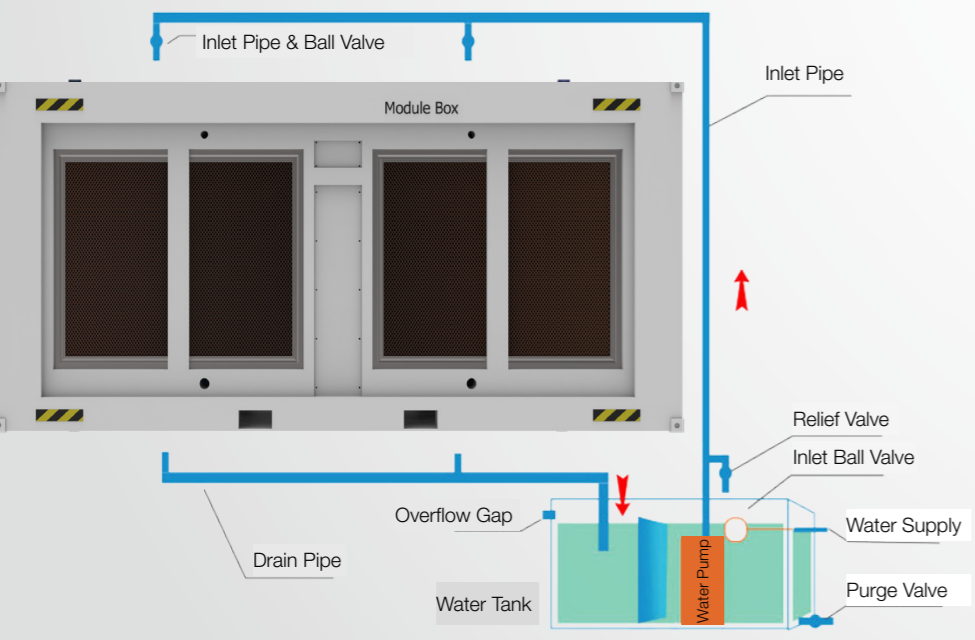
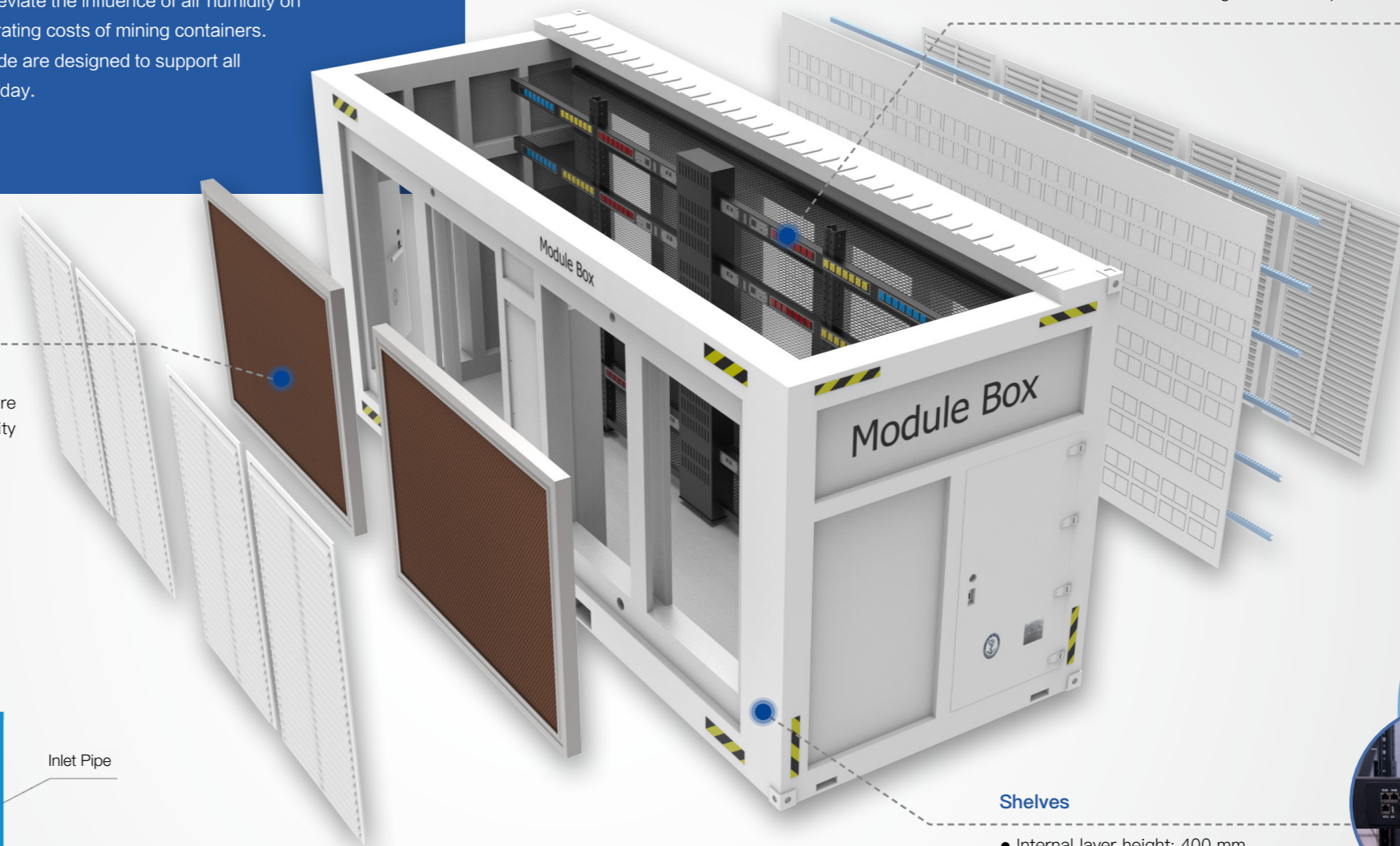
## Cooling System

### Double-layer water curtain cooling

The outer layer curtain helps to reduce the internal ambient temperature and the inner layer curtain helps to alleviate the influence of air humidity on miners, which greatly extends the service life of miners.

### Precautions

- When the temperature is higher than 35 °C, water cooling curtains must be watered.
- Small flow instillation can be used.
- The wet area of the water cooling curtain shall be larger than 70%



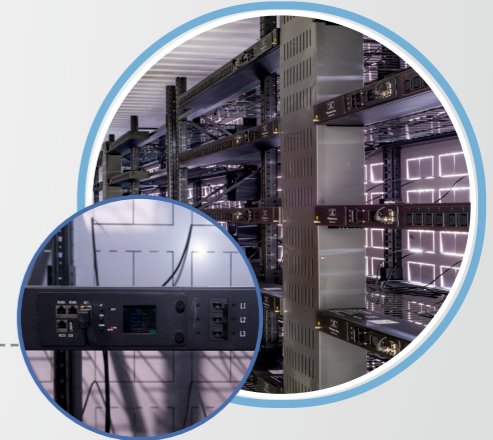
### Miner Built-In Fan Cooling

2 miners are stacked together for installation and the fan is placed towards the outside to reduce the temperature inside the miner.



## Shelves

- Internal layer height: 400 mm
- Rack round hole spacing: 40 mm
- No. of stands (20-foot container): 2 × 6
- No. of stands (40-foot container): 4 × 6
- The layer height can be adjusted according to the miner models.



## Container Certification

- Its structural strength meets international standardized transportation requirements.
- Its load strength, longitudinal rigidity and horizontal rigidity comply with lifting safety requirements.
- Its structure meets stacking strength requirements.



## Electrical Safety Certification

- Distribution cabinet
- Intelligent PDU
- Cable
- Switch
- Network cable





### Multi-Level Security Protection

- Class 1**
  - Leakage protector
- Class 2**
  - Fuse protector
- Class 3**
  - Breaker control switch
- Class 4**
  - PDU independent power outage

### Exclusive Independently Developed Intelligent Control System

- Network protocol commands are supported to achieve independent switching and closing of any PDU.
- Custom switch on and off plan protocols and one-button splitting and integrating local area network .
- Custom management authority protocol, custom power consumption metering, and automatic power off over threshold .
- Independent local service management system allows offline running.

### Core Highlights

|   |  |   |  |
|---|--|---|--|
|  <p><b>90% ↑</b><br/>Reduce 90% basic operation &amp; maintenance staff<br/>Save 90% operation &amp; maintenance labor costs</p> |  <p><b>100% ↑</b><br/><b>Electrical Safety Standards Compliance</b><br/>Independently developed electrical appliance, well-targeted functions, suitable for all high-power miners</p> |  <p><b>100% ↑</b><br/><b>Safe &amp; Reliable</b><br/>Original 3-level security management system<br/>Prevent operation and maintenance staff from stealing computing power</p> |  <p><b>100%</b><br/><b>Intelligent Control</b><br/>24 hours real-time monitoring<br/>Single miner trip protection available</p> |
|  <p><b>Housing Certification</b><br/>CCS certified<br/>CUL certified</p>   |  <p><b>Electrical Safety Certification</b><br/>CUL overall electrical safety certification<br/>CE electrical safety certification</p>   |  <p><b>700 Days Worry-Free After-Sale Service</b><br/>This item applies to all electrical appliances, only change, no repair.</p>  |  <p><b>One-Stop Customs Clearance Service</b><br/>Safe, legal, exclusive customs code<br/>Worry-free shipping</p>               |

### Technical Data



| Specification                       | Module box-20HC   | Module box-40HC         |
|-------------------------------------|---|-------------------------|
| External sizes (mm)                 | 6058 × 2438 × 2896  | 12192×2438×2896         |
| Internal sizes (mm)                 | 5900 × 1380 × 2600  | 11800×1380×2600         |
| Weight                              | 4T(±5%)   | 8T(±5%)                 |
| Overall volume (m³)                 | 42.77   | 86.08                   |
| <b>Shelf System</b>                 |   |                         |
| Internal shelf layers               | 2 × 6   | 4 × 6                   |
| Maximum miners                      | 210   | 420                     |
| Miner model                         | S19Pro or others  | S19Pro or others        |
| Shelf height (mm)                   | 400   | 400                     |
| Adjustable shelf hole distance (mm) | 40  | 40                      |
| <b>Power Supply System</b>          |   |                         |
| Input voltage                       | 360 V – 480 V   | 360 V – 480 V           |
| Module output                       | 200 V – 277 V, 50–60 Hz   | 200 V – 277 V, 50–60 Hz |
| Maximum total power                 | 830 kw/h (3780 A)   | 1500 kw/h (6250 A)      |
| PDU power                           | 3696 w/h (20A)  | 3696 w/h (20 A)         |
| Custom switch                       | 200 V – 280 V   | 200 V – 280 V           |
| Intelligent PDU                     | 200 V – 280 V   | 200 V – 280 V           |
| Intelligent server                  | 200 V – 280 V   | 200 V – 280 V           |
| Multi-Level Security Protection     | Class 1 – Leakage protector<br>Class 2 – Fuse protector<br>Class 3 – Breaker control switch<br>Class 4 – PDU independent power outage |                         |
| Input mode                          | 3-phase equilibrium   | 3-phase equilibrium     |
| <b>Cooling System</b>               |   |                         |
| Cooling mode                        | Water cooling curtain, miner fan heat dissipation   |                         |
| Water supply pressure               | ≤ 1.5 Pa  |                         |
| Cold and heat isolation panel       | Waterproof, flame-retarded  |                         |
| Dust screen                         | Reduce attachments  |                         |
| Louver                              | Rainproof   |                         |
| <b>Other Details</b>                |   |                         |
| Intelligent control system          | The first inclusive network-based background interaction system   |                         |
| Fire fighting system                | Smoke detector  |                         |
| Temperature & humidity monitoring   | Temperature & humidity sensor   |                         |
| <b>Operating Conditions</b>         |   |                         |
| Applicable environments             | For both indoor and outdoor uses  |                         |
| Ground requirements                 | Hardening treatment   |                         |
| Working temperature                 | –35 °C to 50 °C   |                         |
| Working humidity                    | 0–90% RH  |                         |
| Working altitude                    | 0–2000 m  |                         |
| <b>Security Certification</b>       |   |                         |
| Container body certification        | CCS safety certification  |                         |
| Electrical safety certification     | CE & CUL certification  |                         |



# Immersion Mobile Mining Container

Immersion mobile mining container is specially designed for large-scale digital mining. It adopts the latest immersion technology in the industry to solve the problems existing during miner operation including overheating, low heat dissipation efficiency, huge noise, high operating costs, etc. Meanwhile, our independently developed intelligent 0 manual O&M (Operation and Maintenance) system can achieve three-dimensional integrated control through the website remote server, local server and mobile phone server.



### Stand

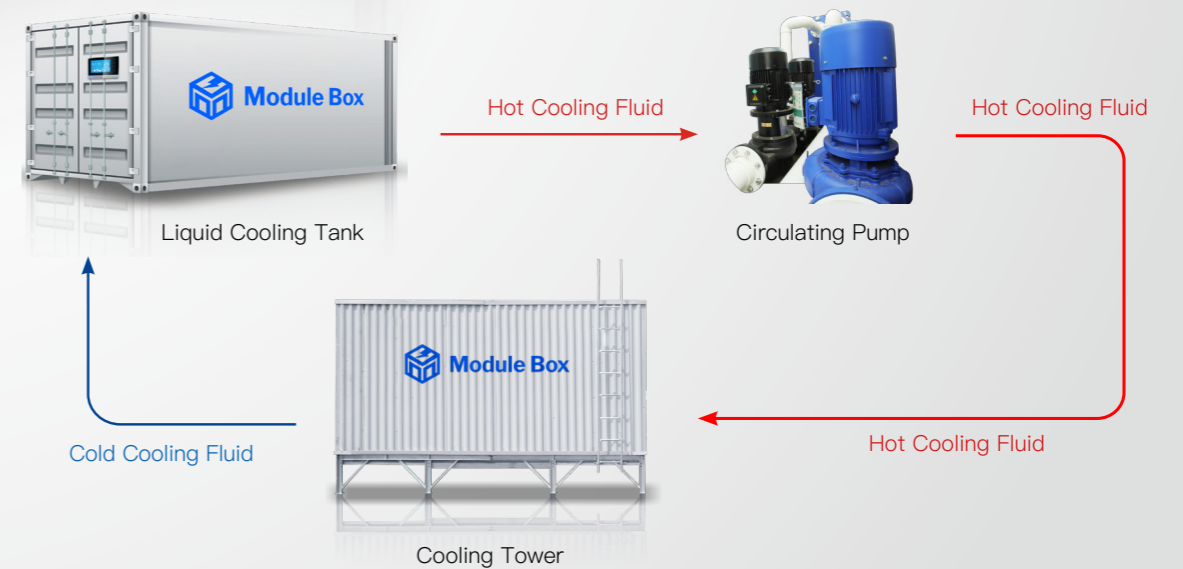
In the container, there are 2 x 24 enclosures. Every enclosure holds 8 miners in vertical arrangement. So, the container can accommodate a total of 384 miners. 48 PDU units provide power supply for each miner.



# Immersion Mobile Data Center Saves Operation & Maintenance Costs

### Cooling System

Every miner is vertically immersed into the cooling fluid in the enclosure and the heat generated by miner is transferred to the outside cooling tower (Cooling towers of different types can be adopted) through cooling liquid for heat dissipation. The cooling liquid after cooling is returned to the immersion mobile mining container through the circulating pump to transfer the heat generated continuously.



## Product Series

We can provide custom immersion mobile mining container services according to your actual requirements and local environment. If you are looking for immersion mobile mining container, just contact us.

### Basic Version.

Meet high performance heat dissipation requirements.

- Quiet, no noise
- Eco-friendly, energy saving
- Stable long-term run
- Modular installation

### Standard Version

Meet higher demands for hash rate and overlocking.

- High hash rate density
- High volume
- No shutdown maintenance
- Low failure rate

### Smart Version.

Equipped with intelligent Internet of things for remote control.

- Equipment intelligent system
- Dynamic replenishment system
- Remote control system
- Hash rate supervision system

## Basic Data

|   |                               |
|---|-------------------------------|
| External dimensions (L × W × H, mm)               | 112192 × 2418 × 2896          |
| Curb weight (excluding miners and cooling liquid) | 11.96 tons                    |
| Full load   | about 25.6 tons               |
| External color                                    | white                         |
| Internal color                                    | greyish-white                 |
| Way of cooling                                    | immersion fluid cooling       |
| Operating temperature                             | -25 °C to 50 °C               |
| Operating humidity                                | ≤ 85% RH                      |
| Altitude  | ≤ 45                          |
| Power supply system                               | TN-S                          |
| Main circuit breaker                              | 6 × 630A                      |
| PDU breaker                                       | 48 × 80A                      |
| PDU fuse  | 25A for every socket          |
| Total power capacity                              | 1.8 MW                        |
| External power input                              | 3-phase, 380V – 415V, 50/60Hz |
| PDU socket power supply                           | single-phase, 200V – 240V     |

### Applicable Model & Quantity

17/19 all series can support 384 miners (default), whatminer 20S/30S + all series can support 576 miners

1.6 MW – 2.1 MW

6KW single stand peak load meets the requirements of over-frequency power.

## Features



**30%** ↑  
**Short Payback Period**

30% faster than fan cooling mobile mining container

**40%** ↑  
**High Investment Revenue**

40%+ profit growth per miner

**99%** ↑  
**High Miner Online Rate**

Infinitely close to 99%

**10 min**  
**Fast miner Maintenance**

Special supporting equipment; Miner no residue cleaning can be finished in 10 minutes.

**2 times**  
**Longer Lifespan**

2 times of extended miner lifespan

**98% degradation**  
**OSHA Compliance**

Cooling fluid is OSHA compliance. Do no harm to human body.

## Low Maintenance Costs

Save labor operation and maintenance costs. A maintainer can manage 5000 miners at the same time.

## Extreme Environment

Suitable for regions with different temperature and humidity conditions, especially for Middle East and other hot areas.

## High Compatibility

Suitable for all main brand miner models.

## No Noise

One of the biggest advantage is to eliminate noise and avoid the impact of noise on hearing and the surrounding environment.

## Intelligent Control

Intelligent O manual O&M system can achieve three-dimensional integrated control through the website remote server, local server and mobile phone server.

BitTech are committed to the R&D and production of mobile mining container. We are good at providing our customers with customer-tailored solutions, no matter your are a beginner or an expert, whenever you have a problem during mining farm construction, you will get a perfect solution from us.

## Free Consulting

We are good at listening to problems our customers encountered. Our professional design team will design a practical solution and recommend the right mobile mining container to meet your mining needs and solve your problem.



## Environment Assessment

We will make a professional assessment on the selected site environment to make full use of the favorable conditions and perfectly place the mobile mining container.



## Worksite Design

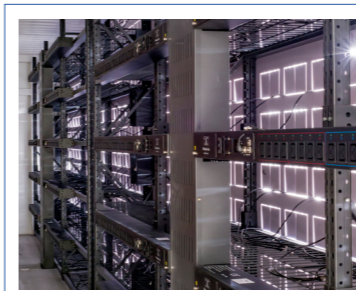
According to the environment conditions, we will give design to perfectly meet our customers' mining demands.

## Customization

At BitTech, we continue to improve and innovate our technology, and customize mobile mining container solutions for our customers. We are committed to helping our customers to lower their operating costs, improve their income and create more values for our customers. We also get a leap-frog development and achieve win-win cooperation while we keep updating our technology.

## Comprehensive Services

We provide comprehensive mobile mining containers, aiming to improve the lifespan and working efficiency of miner, lower our customers' operating costs and maximize their profits.



### Adjustable Shelves

The multi-layer shelf can accommodate many miners. Besides, the shelf height between layers are adjustable to adapt to miners of different models.



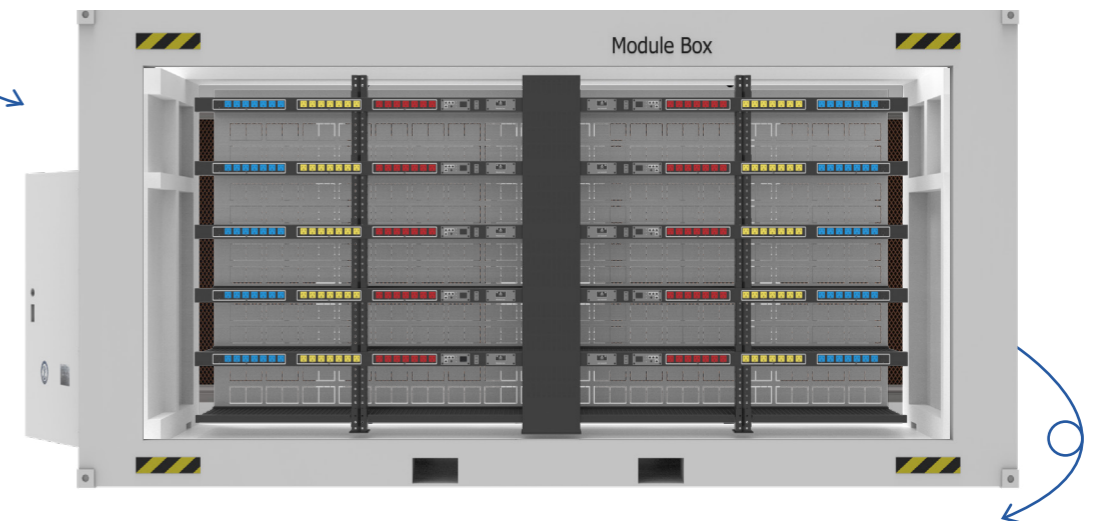
### Water Curtain Cooling System

Double layer water curtain cooling, the outer layer curtain helps to reduce the internal ambient temperature and the inner layer curtain helps to reduce the internal humidity.



### Fan Cooling System

It plays the role of internal cooling while operating normally.



### PDU Socket

We can provide American standard, European Standard and various socket types to meet voltage requirements of different countries.



### Multiple Security Protection System

Our independently developed power supply system supports individual miner power failure to ensure the others miners' safety.



### Intelligent Control System

The prevailing 2.0 intelligent control system can monitor the power consumption of any socket.



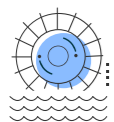
### Technical Support

The 3.0 system under development will achieve zero-labor automatic management to reduce the operating costs.



High energy costs is the biggest challenge for the cryptocurrency mining industry, especially for fixed mining farms. At high price levels, it can only be profitable under extreme optimization. For this reason, BitTech has developed mobile mining container that can be moved to areas with low energy costs at any time to reduce overall operating costs and increase profitability.

We can leverage the synergies between the energy sector and miners to maximize the benefits for energy companies and miner owners by connecting high-consumption miners to power plants, and providing fixed consumption and additional flexibility.



### For Energy Companies

#### Convert Excess Capacity into Additional Income Sources & Production Flexibility

Recent tightening market conditions along with the growing share of renewable energy sources have imposed serious challenges for conventional power plants. Today, solar panels have become so widespread and public procurement often favors renewable sources. As a result, conventional power plants may have to lower their production or even turn off the plant and power plants in operation also free up a lot of excess capacity. Under such conditions, power plants may survive by meticulously optimizing the production to an extreme condition and flexibly adjusting operating plans.

#### Small Investment, Big Income

In addition to gaining income by providing power support for mining containers, power plants may establish their own mining container. With abundant power resources, they only need to prepare a 25 m2 backup safe space for mining containers, they can gain a higher profit.

Mobile mining container allows to be installed in any place with sufficient power supply sources including renewable energy sources. This means that any type of power plants can benefit from mining container optimization. When the mobile mining container arrives, all you need to do is to connect it to power supply and WiFi, and then you can gain profits.



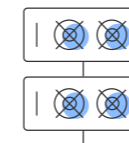
Local Heat Supply Plant



Solar Power Plant



Hydroelectric Power Plant



### For Miner Owners

#### Maximize the Profit Through Scale Competition & Professional Management

For miner owners, return on investment is influenced by 2 variables — server operating efficiency and power cost. Mobile mining container offered by BitTech includes necessary infrastructure, software and management systems. What miner owners need to do is to focus their investments into servers to gain a higher profit.



#### Server Operating Efficiency

Our independently developed intelligent power supply system support individual socket power failure without affecting the operation of other miners. Additionally, our cooling system works 24 hours a day to provide an efficient environment for miners and improve the operating efficiency of miners.



#### Power Costs

Our intelligent power supply system enables us to monitor the power consumption of every socket at any time. The 3.0 system under development will alarm in case of any abnormal power consumption occurs, to some extent, it reduces the power costs for miner owners.

BitTech mobile mining containers are provided with **intelligent control system**, the global first independently developed network-based interaction system. Now, the system has been updated to 2.0 version. It is equipped with independent local server management system that allows offline operation. Additionally, it can control the closing and opening of any socket to ensure the independent operation of each miner. It is also equipped with a custom electric charge measurement program that can generate electrical charge data report automatically. The 3.0 version under development makes the real zero-labor automatic management possible.



INTELLIGENT CONTROL SYSTEM

## Function Support



- + Distribution cabinet internal server displays IP address.
- + Remote controller, WIFI mobile APP remote control
- + Support network protocol command
- + Can control the closing and opening of any socket
- + Support custom switch on/off
- + One button LAN/WAN switch
- + One button/intelligent temperature control system
- + Socket, pump abnormal status alarm function
- + Custom management authority agreement
- + Custom electrical charge measurement, automatic power off over threshold
- + Users can check the status of miners whenever and wherever possible
- + Automatic generated electrical charge data report
- + Independent local service management system allows offline operation
- + Equipped with malicious counterfeit self-destruction system
- + Provided with multi-language protocol access port

### How to Operate the Intelligent Control System?

The unique intelligent control system of BitTech mobile mining container can significantly reduce and finally achieve zero-labor automatic management, thereby reducing the operation & maintenance costs, improving the hash rate and income, and making mining easier and more intelligent.

**Here,**

***we take the PDU operation as an example to demonstrate how to operate the intelligent control system.***





Module Box

# HENGSHUI BITTECH

---

info@module-box.com

[www.module-box.com](http://www.module-box.com)

